

La Rioja BIKE RACE

12.13.14 MAYO 2023

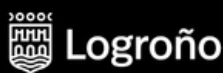
www.lariojabikerace.com



MTB CON DENOMINACIÓN DE ORIGEN

RACE GUIDE

ENG



GARMIN.



SKODA

GOBIK®



ALL YOU NEED TO KNOW



LICENSES

It is essential to be federated in competition cycling with a license approved by the UCI or have contracted the temporary license for the event. Licenses from other sports are not valid.



INCLUDED SERVICES

- Race pack
- Gobik Jersey
- 1 bike plate and 1 back bib
- Stage profile stickers
- Liquid and solid feed stations
- Mechanical service on route
- Medical service
- Garmin Warm Up Zone
- KH-7 Bike Cleaning
- Sportograf photo service
- Pirelli Change & Recycle tires
- Guarded bicycle parking
- Wardrobe service
- Toilets, changing rooms and showers



CHECK YOUR RACE NUMBER

Check your RACE NUMBER here.



Check your RACE NUMBER here.



VERIFICATIONS

- 12.05 from 10:00 a.m. to 2:00 p.m., at the La Rioja Sports Center.
- You must show the original ID/passport and UCI license.
- A cyclist could collect the bib numbers of his companions, presenting the signed authorization, the photo of the ID/Passport and the photo of the UCI 2023 license.



PRIZE MONEY

Prize money are awarded to the UCI Elite men and women categories.

	1	2	3	4	5
STAGE 1	200 €	150 €	100 €	75 €	50 €
STAGE 2	200 €	150 €	100 €	75 €	50 €
STAGE 3	200 €	150 €	100 €	75 €	50 €
OVERALL	300 €	250 €	200 €	175 €	150 €



BRACELETS

- During verification, you will be given an identification bracelet, which you must wear during all competition days, for restricted access and for security.
- Also a paper BAG bracelet that you can use to store your belongings in the wardrobe.



TECHNICAL AREA ACCREDITATION

- It is necessary to have a UCI 2023 license.
- To obtain an accreditation, the person who wants to be accredited simply must appear on site, at the information point during the verifications or at any of the competition office hours during the stages.

How to get to the Technical Zones?



SPECIAL AWARDS

ISB MOUNTAIN AWARD

The fastest couple winner of the 'ISB SPORT Mountain Award' will be awarded a prize money.

ISB Sport Bearings repeats as official sponsor of the competition and will allocate € 100 in prize money for stage for the 'ISB Mountain Award'. As it was in the last edition, in each of the three stages of La Bike Race presented by Pirelli will award a rider in each category, and this time it will do so with a check of € 100 per day.

For the Flash Stage, the fastest runner in the Master category of CP1 will be awarded, in the Škoda Super Stage the Elite men of CP2, and in the Oakley Finisher Stage the Elite women of CP1.



SPECIAL AWARDS

PIRELLI AWARD



Pirelli will present a Scorpion XC H 29x2.2 tire to the participant who passes in a specific position in each of the stages of the La Rioja Bike Race presented by Pirelli, at the points:

	POINT	POSITION
FLASH STAGE	CP 2	PARTICIPANT POSITION 240
ŠKODA SUPER STAGE	CP 1	PARTICIPANT POSITION 80
OAKLEY FINISHER STAGE	CP 2	PARTICIPANT POSITION 120



Bike Race by Garmin Segments

We know that you loved this initiative in the last La Rioja Bike Race presented by Pirelli, so we will once again enjoy the timed sections in the middle of the stage thanks to GARMIN

There are few things you like more than riding a bike, but beating each other is. Now, thanks to the collaboration between GARMIN and OCTAGON ESEDOS, the company that organizes the Mountain Bike competitions in stages called "Bike Race by Octagon Esedos", you can be the fastest in our STRAVA club and win GARMIN merchandising.

What are the Bike Race by GARMIN Segments?

It is a classification parallel to any other, in which the fastest will be rewarded in some very specific and marked segments within each stage. At the end of the three stages, the times will be added up and a final winner will come out.

You have doubts? In the following [video](#) we explain it to you!



How to participate in the Bike Race by GARMIN Segments?

1. Be registered in Andalucía Bike Race by GARMIN
2. Be a follower of the club in STRAVA: <https://www.strava.com/clubs/949643>
3. Have your profile open in STRAVA or make public the activity in STRAVA, the same day of the stage just to reach the finish line, and before 16:00 hours. For the Finisher stage, they must be published before the awards ceremony.

In each stage the winner will be awarded with a set of GARMIN merchandising products, and the leader's jersey will be given to the male and female runner at the top of the ranking.

IMPORTANT!

- Classification available for all riders, competitive and no-competitive.
- Not able to compete for the final classification those riders whose due to mechanical breakdown or any other circumstance, don't finish any of Andalucía Bike Race stages.
- Not able to compete for those riders who during any of the segments or the route of their corresponding stages violate any point of the race regulations.



EQUIPMENT

- All category race leaders must wear the leader's jersey provided by the organisation. It has a blank space on the front and back to place the rider's sponsors.
- For safety reasons, it is recommended to carry a mobile phone. Route signs, race numbers and participant bracelets have a telephone number printed on them, which should only be called in case of an emergency. It's not a customer service number!

CLAIMS

- Claims must be formally submitted to the Comissaires and in according to the UCI regulations for MTB.

TRACKS

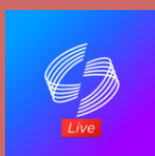
- The organization may publish on its website the GPX track file the day before the stage, but it will be informative only. Arrows prevail.
- The trails on which the competition takes place are assigned only and exclusively for the days of the race, therefore it is not allowed to spread the route's GPS tracks.

ON BOARD CAMERAS

- They are not permitted.

FOLLOW THE RACE MINUTE BY MINUTE FROM YOUR MOBILE PHONE!

With the Timingsense Live App you will know exactly where any rider is at any time. You can find them with its name or race number, and you can also add them to favorites. If you are interested, you will have to download the APP through [Google Play](#) or [App Store](#).



[@LARIOJABIKERACE](#)



[@LARIOJABIKERACE](#)



[@LARIOJABIKERACE](#)

**[#LRBR23](#) [#LRBR2023](#)
[#LARIOJABIKERACE](#)**

FLASH STAGE

LOGROÑO

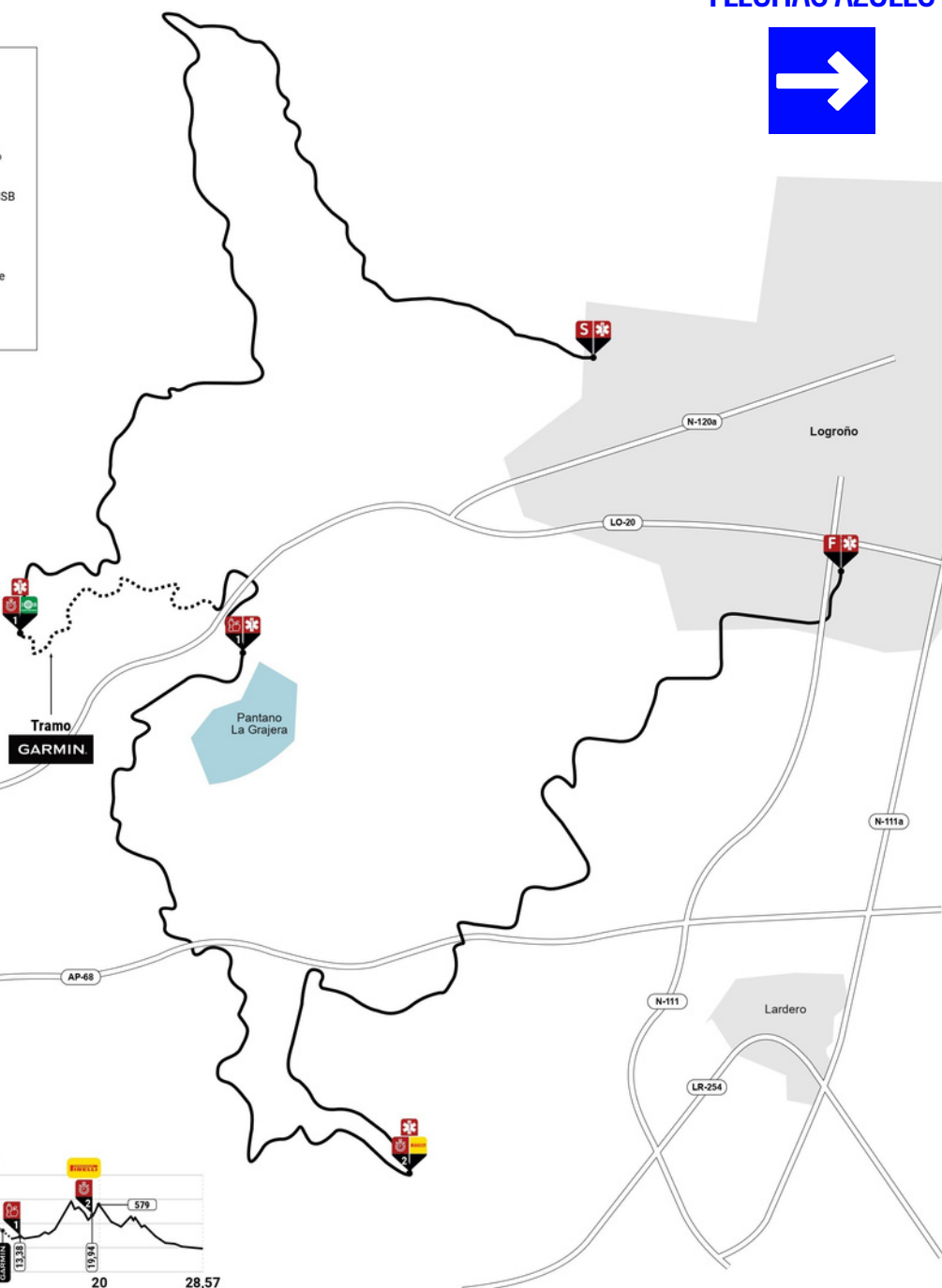
28,57 km & 526 m+

FLECHAS AZULES



SCHEDULE - FRIDAY, MAY 12

- 10:00 h Start of bib pick-up - Palacio de Deportes de La Rioja
- 14:00 h End of bib pick-up - Palacio de Deportes de La Rioja
- 15:00 h Opening of the Race Office - Calle Grecia, Logroño
- 15:40 h Start grid formation - Calle Grecia, Logroño
- 16:00 h Start Stage 1 - Calle Grecia, Logroño
- 17:01 h Estimated arrival of the first participant - Palacio de Deportes de La Rioja
- 17:30 h Opening of bicycle parking - Palacio de Deportes de La Rioja
- 17:30 h Award Ceremony - Palacio de Deportes de La Rioja
- 17:45 h Cut-off time at Feed Station 1 (km 13)
- 18:54 h Arrival of the last participant. Stage 1 - Palacio de Deportes de La Rioja
- 19:30 h End of services - Palacio de Deportes de La Rioja
- 19:30 h Closing of bicycle parking - Palacio de Deportes de La Rioja



	UBICACIÓN	KM	COORDENADAS	PRIMERO	ÚLTIMO
	Calle Grecia	0	42.465819,-2.476839	16:00	16:25
	Logroño	10,27	42.449352,-2.522397	16:23	17:23
	Logroño	13,38	42.448648,-2.504395	16:28	17:36
	Valhondo	19:94	42.417475,-2.491247	16:44	18:15
	Palacio de Deportes	28,57	42.453196,-2.456675	17:01	18:54

SKODA SUPER STAGE XCM

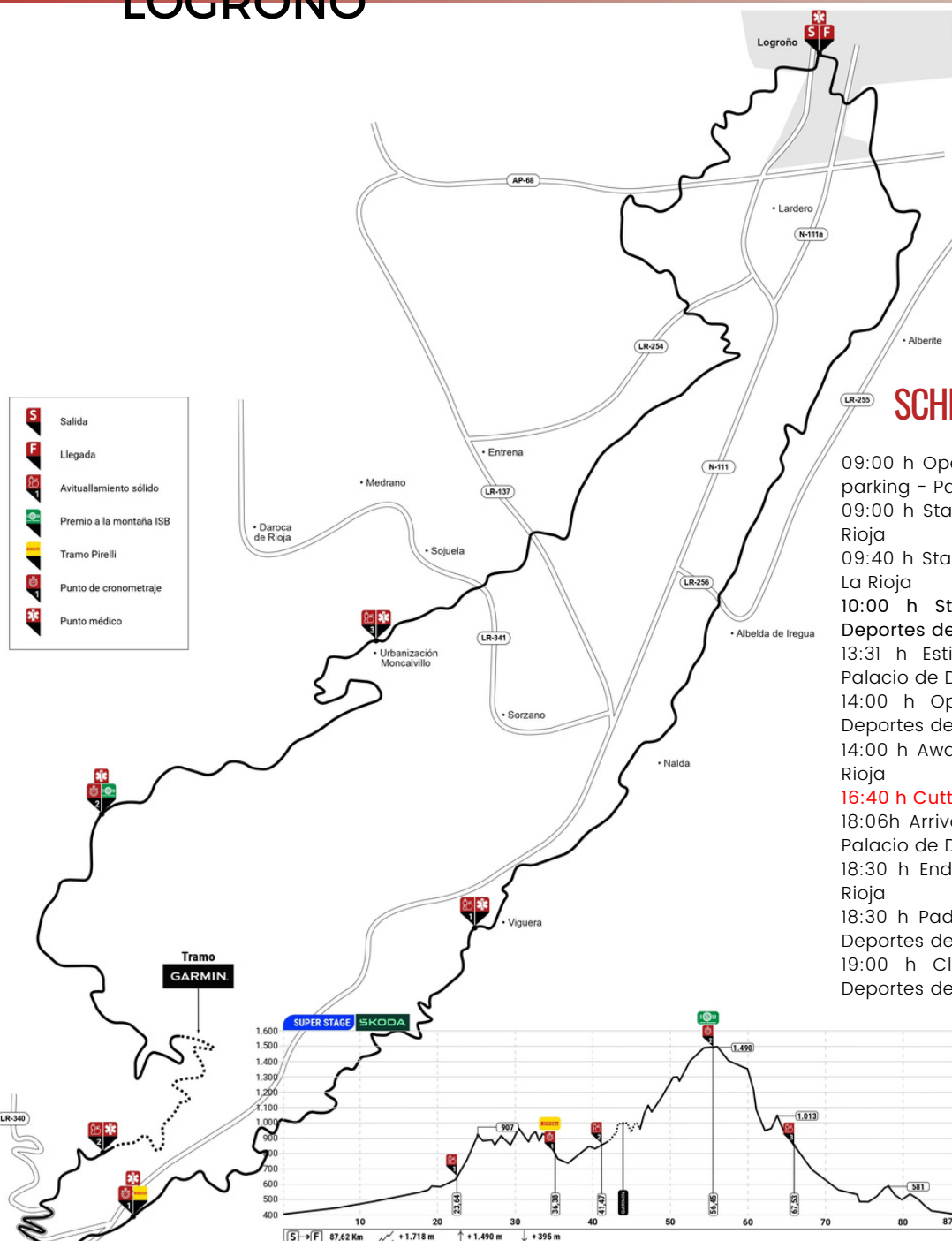
LOGROÑO

87,62 km & 1.718 m+

FLECHAS AZULES



- Salida
- Llegada
- Avituallamiento sólido
- Premio a la montaña ISB
- Tramo Pirelli
- Punto de cronometraje
- Punto médico



SCHEDULE - SATURDAY, MAY 13

- 09:00 h Opening of Paddock, Race Office and bicycle parking - Palacio de Deportes de La Rioja
- 09:00 h Start of services - Palacio de Deportes de La Rioja
- 09:40 h Start grid formation - Palacio de Deportes de La Rioja
- 10:00 h Start ŠKODA Super Stage - Palacio de Deportes de La Rioja
- 13:31 h Estimated arrival of the first participant - Palacio de Deportes de La Rioja
- 14:00 h Opening of bicycle parking - Palacio de Deportes de La Rioja
- 14:00 h Award ceremony - Palacio de Deportes de La Rioja
- 16:40 h **Cutt-off time at feed station 3 (km 66)**
- 18:06h Arrival of last ŠKODA Super Stage participant - Palacio de Deportes de La Rioja
- 18:30 h End of services - Palacio de Deportes de La Rioja
- 18:30 h Paddock and Race Office close - Palacio de Deportes de La Rioja
- 19:00 h Closing of bicycle parking - Palacio de Deportes de La Rioja

	UBICACIÓN	KM	COORDENADAS	PRIMERO	ÚLTIMO
	Palacio de Deportes	0	42.453186,-2.456646	10:00	10:15
	Viguera	23,64	42.305146,-2.538521	10:59	12:29
	Torrecilla en Cameros	36,38	42.257289,-2.617011	11:30	13:37
	Nestares	41,47	42.269996,-2.618467	11:44	14:07
	Carretera del Moncalvillo	56,45	42.328342,-2.613305	12:26	15:45
	Camino de la Alameda	67,53	42.359122,-2.547830	12:48	16:31
	Palacio de Deportes	87,62	42.453196,-2.456675	13:32	18:06

OAKLEY FINISHER STAGE XCM

53,93 km & 1.736 m+

ALBELDA DE IREGUA

FLECHAS ROJAS



SCHEDULE - SUNDAY, MAY 14

09:00 h Opening of Paddock, Race Office and bicycle parking - Palacio de Deportes de La Rioja

09:00 h Start of services - Palacio de Deportes de La Rioja

9:40 h Start grid formation - San Prudencio Street, Albelda de Iregua

10:00 h OAKLEY Finisher Stage - San Prudencio Street, Albelda de Iregua

12:15 h Estimated arrival of the first participant - San Prudencio Street, Albelda de Iregua

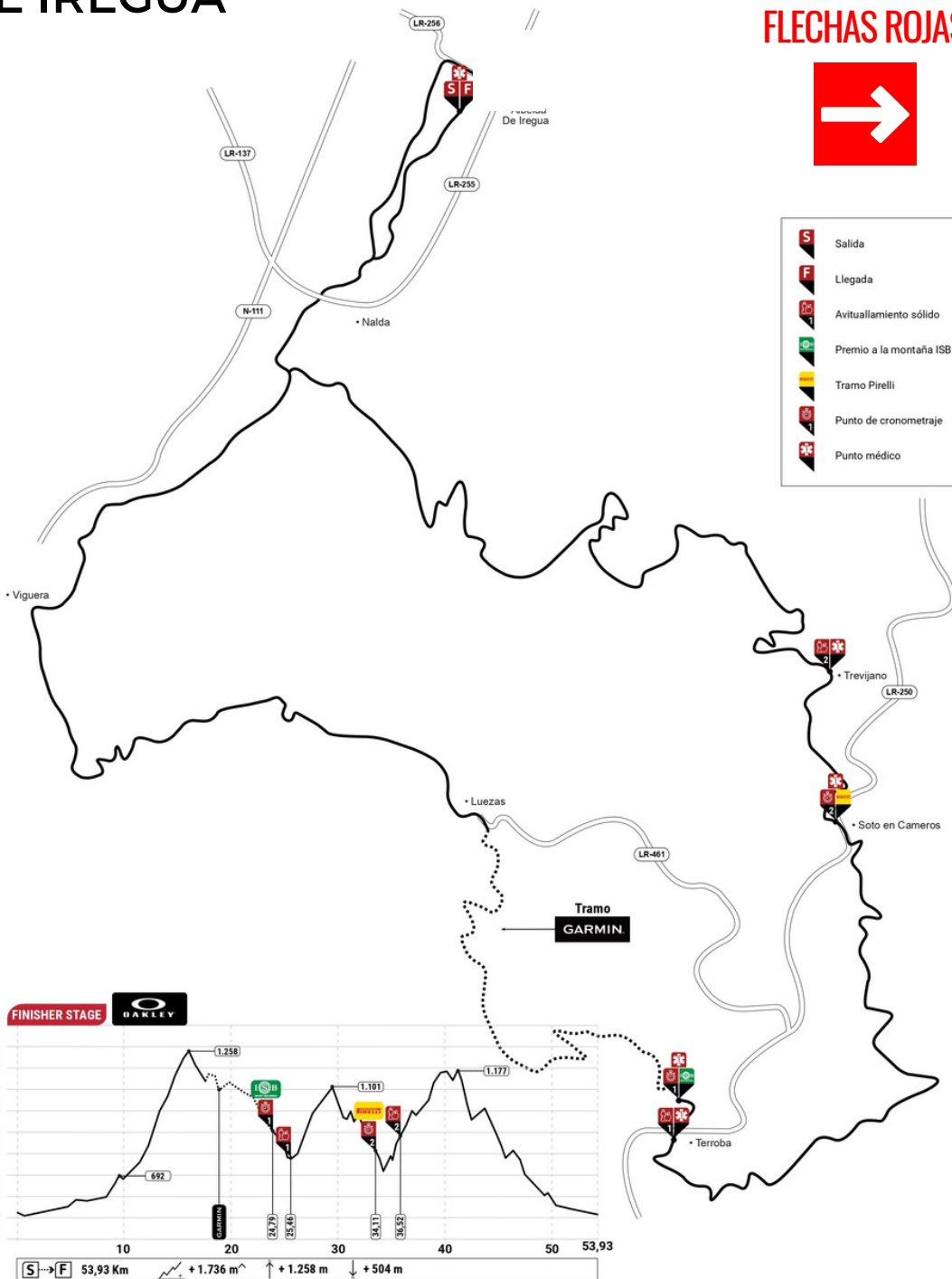
13:00 h Award ceremony - San Prudencio Street, Albelda de Iregua

15:42h Arrival of last OAKLEY Finisher Stage participant - San Prudencio Street, Albelda de Iregua

14:30 h Cut-off time at Feed Station 2 (km 36)

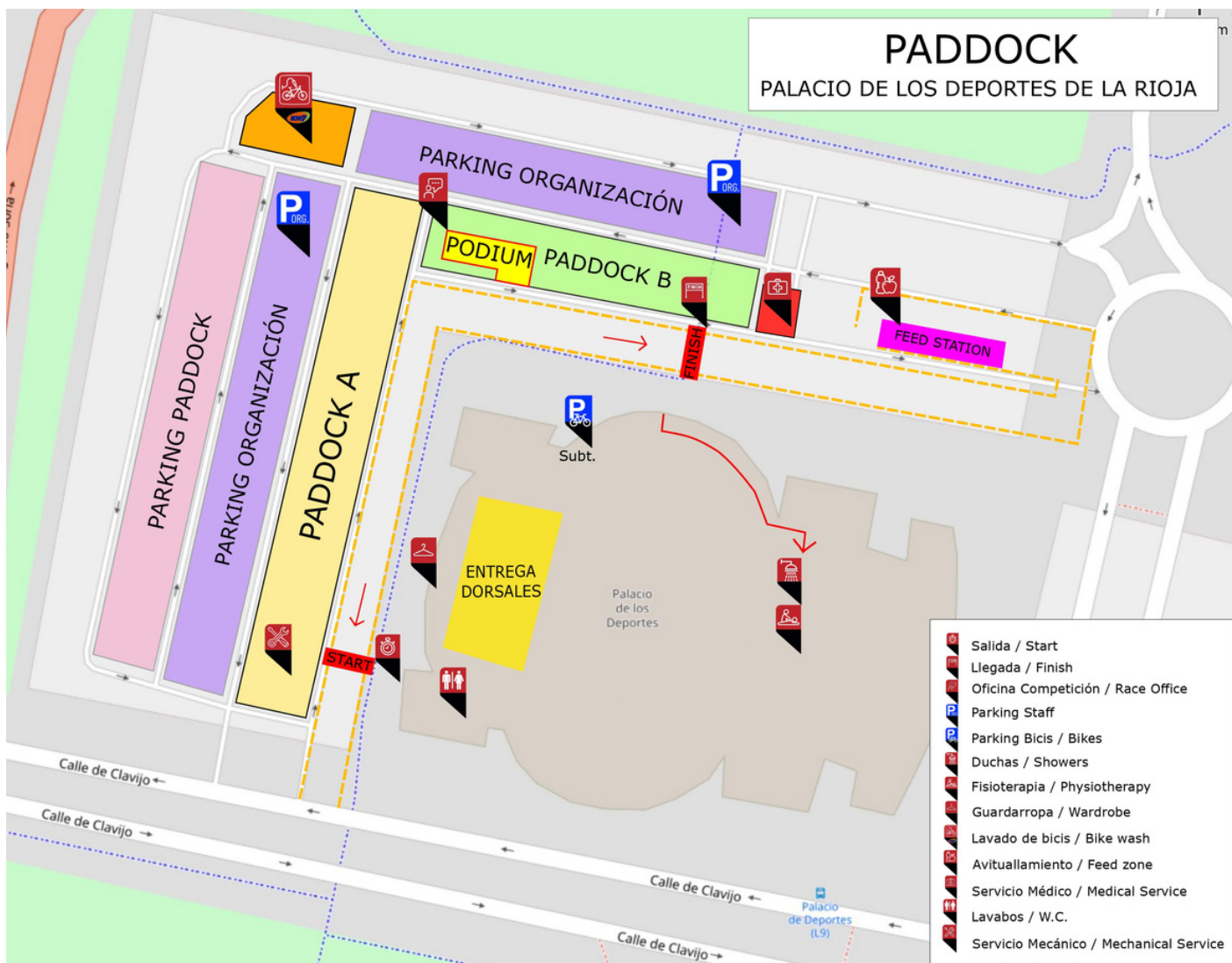
16:00 h End of services - San Prudencio Street, Albelda de Iregua

16:00 h Paddock and Race Office close - San Prudencio Street, Albelda de Iregua



	UBICACIÓN	KM	COORDENADAS	PRIMERO	ÚLTIMO
	Calle San Prudencio, Albelda de Iregua	0	42.356873,-2.476952	10:00	10:15
	Terroba	24,79	42.259079,-2.447681	11:06	12:54
	Terroba	25,46	42.255022,-2.449681	11:07	12:57
	Salida de la LR-250	34,11	42.287010,-2.427340	11:30	13:50
	Pista de Nalda a Trevijano	36,52	42.301648,-2.428217	11:40	14:19
	Calle San Prudencio, Albelda de Iregua	53,93	42.356826,-2.476969	12:19	15:42

PADDOCK



LOGROÑO

Palacio de los Deportes de La Rioja

Avenida Moncalvillo, 2 | 26008 LOGROÑO



42.453394, -2.456638

SET UP (ACCREDITED): Thursday 11.05 | 4 pm to 8 pm
DISMANTLE: Sunday 14.05 | from 2 pm

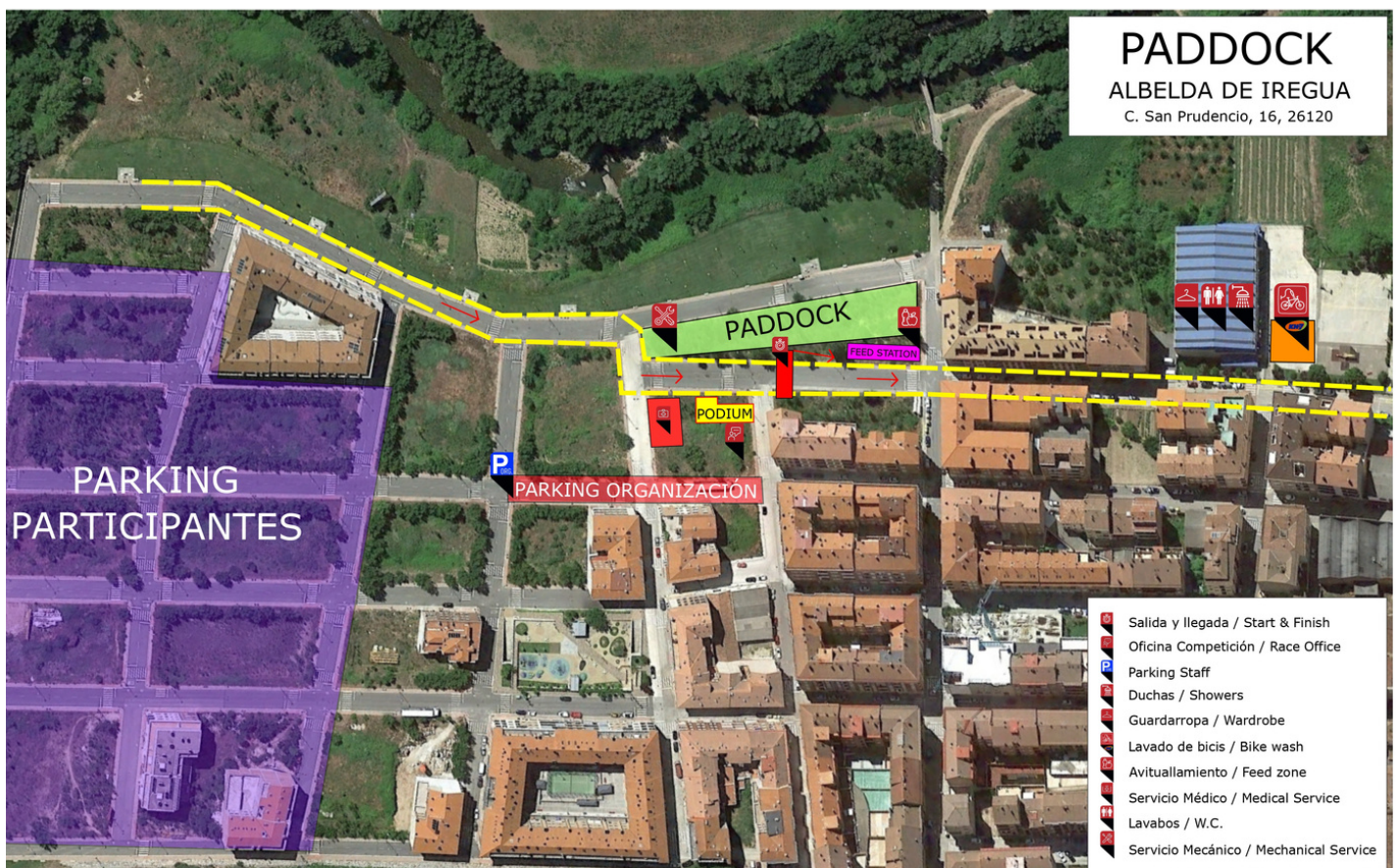
SALIDA STAGE 1

LOGROÑO, CALLE GRECIA



SEDE STAGE 3

ALBELDA DE IREGUA



WHO WE ARE



AITOR JIMÉNEZ
DIRECTOR DE CARRERA



JORDI MAS
RESPONSABLE DE
SEGURIDAD VIAL



DANI SAENZ
RESPONSABLE DE
RECORRIDOS



LUIS MOLINA
RESPONSABLE DE
SEGURIDAD



MIREIA SOLA
RELACIÓN DE EQUIPOS,
PADDOCK Y LOGÍSTICA



JOSÉ PASTOR
RELACIONES INSTITUCIONALES



MANEL TROYANO
DIRECTOR COMERCIAL



SERGI MÉRIDA
ASISTENTE COMERCIAL



CARLES JIMÉNEZ
HOTELES Y LOGÍSTICA



ELI SIVERA
ATENCIÓN AL PARTICIPANTE
INSCRIPCIONES



LAIA BOVE
DIRECTORA DE
COMUNICACIÓN





12·13·14 May 2023